

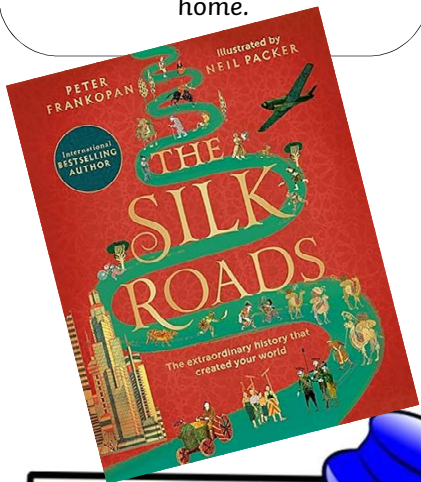
Dear Parents,

This half term our topic is all about trade over time and how it has impacted our modern world. We will look at the silk road, the industrial revolution, the port of Blyth and generally how trade has changed. This will take place in History and Geography. In Science we will focus on classification. Alongside this we will be looking at how to make an interactive quiz in computing and speaking about our homes in French.

Mrs Timmins and Miss Davies

**Our recommended read:**

This half term 'The Silk Roads' will be available at the library or in school for you to borrow and share at home.



What is **trade** and how does it impact our life?

Why was the **Port of Blyth** important for trade?



What was the **Industrial revolution**?

How did the **transport** of trade change over time?

What sort of **goods** are traded from where?

# Follow the Yellow Silk Road

## Spring 1

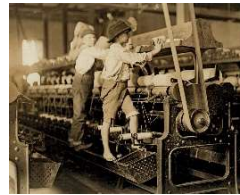
**Things to remember:**

- Tuesday** - PE day and forest school (Y5)
- Thursday** - Reading books changed and PE day (Y5)
- Friday** - Spelling test and library day. PE day (Y6)



### The Silk Road

A network of trade routes that connected Europe and Asia, allowing goods, ideas and cultures to be shared.



### The Industrial Revolution

A period when machines and factories changed how goods were made, beginning in Britain in the 1700s.



### Port of Blyth

A harbour in Northumberland where ships load and unload goods such as coal, timber and wind turbine parts.

## Useful words

**Economy** – How a country makes and uses money through trade and industry.

**Exports** – Goods sent to other countries to be sold.

**Factory** – A building where goods are made using machines.

**Goods** – Items that are made or grown to be sold or traded.

**Imports** – Goods brought into a country from elsewhere.

**Merchant** – A person who buys and sells goods.

**Raw materials** – Natural resources used to make products, such as coal or cotton.

**Trade** – The buying, selling and exchanging of goods between people or places.

**Trade route** – A path or journey used to transport goods between places.

**Transport** – Ways of moving goods and people, such as ships, trains or camels.