

# Grange View C.E



## First School



Welcome to this half terms'  
Topic Information letter  
for Elm and Beech Class

Miss Darlow  
and Mrs Chapman



# What are things made of?

Autumn Half Term (2)

## Numeracy:

Our key focus this half term is mainly concluding our Addition and Subtraction- Children will be learning the symbols for number sentences in Year 1 and becoming confident in the formal column methods for the two operations in Year 2. Additionally, in Year 1 we will be revisiting place value as well as sorting and classifying 2D & 3D shapes, where as in Year 2 we are making amounts in pounds and pence as well as formalising multiplication and division by looking at equal groups and arrays.

## Science - materials

Our main theme this half term is materials. During this topic the children will be learning all about the everyday materials that they encounter all around them. They will be able to identify what are objects are made of and conduct experiments to find out the suitability and properties of those materials. They will look at how materials can be changed when they are squashed, bent or twisted.



## Art/DT

This half term we will be looking at different sculptures. We will be focusing on pattern and print and the Angel of the North. The children will be creating their own sculpture as well.

The children will also be using their own artistic talents and skills to create Christmas themed cards, decorations and artwork collections.

This half term we will also be incorporating art and design into our RE other faiths learning. The children will be learning about artists and being mini artists based around Sikhism and Judaism.

## Literacy

### Reading

During this half term children will read in a variety of situations. There will be shared whole class sessions, Year two will have small group guided sessions, and all will have one to one with an adult weekly as well as encouraging a love of independent reading.

### Reading at home

*We have recently re banded all our books and we're excited to continue to develop a love of reading with the children. They will each have a reading record and bring books home on a daily basis - please read with your child as much as you can and sign their record - we have a new reward system in both classes to celebrate their success and hope to have them progressing through the bandings brilliantly, this will help with Y2 SATs and the Year 1 phonic screening.*

### Writing

The children will write in the following genres; Traditional tales and poetry. They will be thinking about their senses and using it to enhance their writing.

They will learn to improve their sentence structure, grammar and punctuation as well as continuing to work through their spellings in a weekly test.

### Handwriting

We use a pen pals system in school, where they do daily letter join practise. There are many ways you can help build muscle strength for your child - please ask us for suggestions.

### Speaking & Listening

Children will encounter a variety of speaking and listening opportunities. Presenting information to their class during news, show and tell and through team building activities.

## PE - Games

In preparation for our forthcoming Christmas Play, the majority of the children will be learning a short dance to perform in groups. Meanwhile we will be developing their fitness by taking part in short, fast paced circuit activities with Miss Clapperton.



We are also very excited to continue to have Debbie in on alternate Wednesdays with each class - please ensure you have PE kits in.

## RE - Christmas

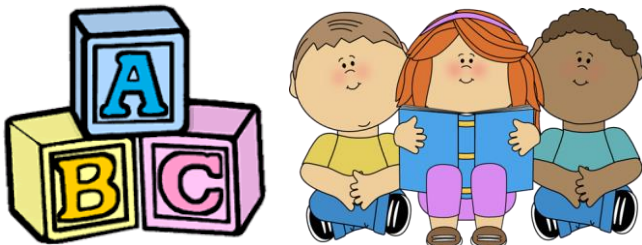


The children will be thinking about Christmas now and traditions in their own lives and linking them to the teachings in the bible. They will think about what is important to them and what they are thankful for. The children will be learning about the story of the nativity and why it is important and relevant to Christians today.

## RWI- Phonics

This half term the children will be going into new RWI groups to learn phonics. They will be learning new set 2 and 3 sounds.

Keep your eyes peeled for videos on our website and facebook that shows you everything you need to know about phonics and how we teach it.



## PSHE

The theme this half term is 'Healthy relationships'. During the term, they will discuss the importance of not keeping secrets, knowing ways to share their views and opinions with others, to listen to each other and play cooperatively as well as know the importance of respect for differences and similarities between people.

## History/Geography

The main focus this term is Science however we are also using it as a vehicle to develop some Geography skills. The children will be looking at aerial photos of the area and comparing them to real life aerial photos.



They will then locate Widdrington on a map and look at the different materials and familiar landmarks that appear. Finally they will contrast a map and aerial photo of the Angel of the North - to link into their Key Stage Sculpture project.

## ICT - Databases and word processing

As an introduction to branching databases, the children will be using their knowledge of materials to create and sort them in a database based on their properties.



Also as part of their literacy work they will be writing up their recipes for a healthy meal with the intention to make a Key Stage recipe book to sell at the Christmas Fair.

## Homework

**Reading** - Children will be bringing home their home reading books during the week. It would be helpful if you could either write or sign the book to say you have heard them read, it helps us to avoid repeat reading the same pages. *We would really like to give the importance and value of reading a big push this year to help create confident, fluent readers throughout school. In Year 1 reading confidence will help greatly with the phonic screening as will fluency and confidence for the Year 2 SATs reading assessments in the Summer.*

Additionally the children may bring home a second book that they have taken out of the library on our Friday visit.

**Spellings and Times Tables** - Children will be given differentiated spellings to learn for their weekly spelling test on a Friday morning. Please help your child as much as possible learn these words as they will help with their confidence and fluency as both a reader and writer.

With the new expectation of compulsory times table tests at Year 4 there are certain times tables we endeavour to have the children fluent in by the end of each year. **Year 1: 2x and 10x table. Year 2: 2x, 3x, 5x and 10x table.** Please whenever the opportunity arises help your child continue to practise these number sequences and become more fluent and confident.

**Maths / English Homework** - Children will be given some Maths Homework on School 360, within the Frog resources. These will be available to complete from Friday afternoon to the following Friday morning at 8am. . The maths homework is usually linked to the work they have done that week in Numeracy and should be appropriate for them to complete independently, this is aiming to replace Mathletics as it has proven more popular with the children throughout our trial in KS2 last term.

**Thanks for your help and support.**

## Parental Help/Resources

We would very much appreciate your help/skills/resources that would link to any of our topics for this and the following half term throughout the year. If you feel that you could help us and your children out in any way please contact school and let us know.

## Home Time

If you need to change the usual arrangements for picking up your child from school, please let school know as soon as possible. As you will understand we cannot allow children to leave the school premises unless we have permission from parents or carers.

## Forest School / PE Kits (Tues, Wed and Friday)

Classes will be using the forest area whenever possible, we have waterproof trousers which we provide for each child but please ensure that their wellies are in school to avoid their school shoes being ruined. Similarly, a warm winter coat /hat / gloves should be in school so that are comfortable.

We are intending to do Yoga on Wednesday afternoons and other PE on a Tuesday (Y1) or Friday (Y2), so please ensure that they have their PE Kits as well as appropriate footwear in school at all times, especially if they have done an after school club the kit must return the next day.

Last year, across the whole school there was a high demand for the spare PE kit to be used and as a result we have very limited provisions now. Finally, if your child has had their ears pierced - ideally the earring should be removed for PE if not we can provide tape.

In general, long hair needs to be tied up for PE but would be best tied up at all times in school.