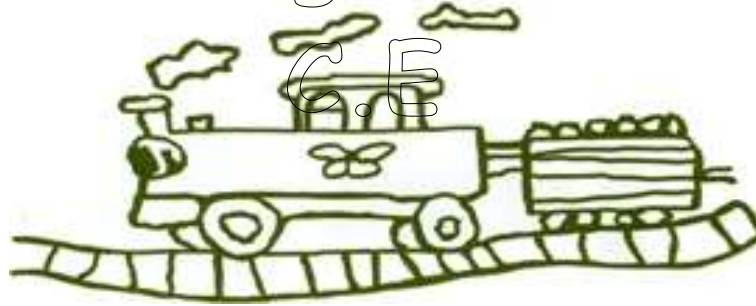


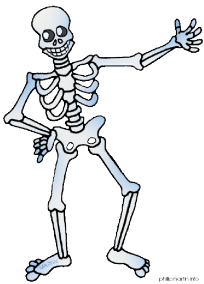
Grange View



First School

Welcome to this half terms Topic
Information letter for Willow and
Year 3

Mrs Timmins & Miss Conroy
Mrs Cessford



Inside & Out

Summer Half Term (1)

Numeracy:

Year 3 will be continuing with length and perimeter and then moving onto fractions. We will be continuing to develop our skills in problem solving and reasoning.

Year 4 will be looking at fraction, decimals and money this half term.

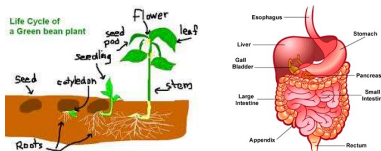
We will be continuing to developing our reasoning and problem solving skills within our lessons.

Science - *Our bodies: the digestive system and teeth.*

Our big theme this term is Inside & Out.

Within which the children will be studying one large science topic.

Throughout the term the children will be learning about human teeth; their name, shape and purpose. Also they will learn all the names and functions of the parts of the digestive system.



Throughout our Forest School learning, we will compare plant structures and doing some pond dipping.



Music - *Violins Thursday afternoons*

As part of our Music connections, all children in Year 4 have learnt to play the violins. Our new tutor has taught us lots of new songs and how to use our instrument. We are more confident and can now play using the strings and bow. We can play several different songs confidently. We are continuing to use our fingers on the strings to play more notes.



Literacy

Reading

During this half term children will read in a variety of situations throughout the week at school in a shared whole class session, in a small group guided session, one to one with an adult and also independently. The children will look at a range of stories during carpet time as well as Imaginary settings and poetry.

Writing

The children will write in the following genres; story writing based on imaginary world as settings.

We will continue with topic based writing on our Friday lessons, using our subject word power words. We will target key skills in SPAG lessons as well as continuing to work through their spellings in a weekly test.

Speaking & Listening

Children will be developing a lot of their skills during the residential at the end of term.

Needing to listen and communicate with each other in team tasks.

Art/DT

Children will be learning how to draw portraits and profiles of pictures. Finding different techniques for improving their sketching and drawing people. They will also be using split pins to follow instructions and make their own moving body to assist in their skeleton.



PE - Games

This term we are developing our games skills with Coach Joe from rugby. We will focus on tag rugby and hopefully be able to play full games by the end of the term.



Swimming is taught by qualified swimming coaches at Morpeth Leisure Centre every Wednesday afternoon, the children are always supervised by school staff.

PSHE- Health and wellbeing

This term we will be learning all about being healthy and safe. We will be learning about healthy living and what a balanced diet is. We will also be learning about the importance of good hygiene and how to look after our bodies. We will then move onto learning about keeping ourselves safe.



RE - Who is Jewish? And how do they live?



Throughout this topic the children will be learning about Judaism. We will be looking at special event and artefacts as well as how they live their lives. We will compare it with what we know about Christianity to see the similarities and differences.

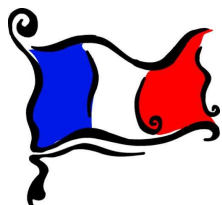
History/Geography

Although our topic is predominantly Science based, the children will be learning about the role of archaeologists and how they find evidence from the past through investigating bones.



The children will be making model bones using salt dough and then using archaeological techniques to dig and retrieve them from the raised beds. Once located they will then use mapping techniques to record where each bone has been found, in keeping with modern archaeological techniques,

MFL - French - My School Day



The children will be taught how to say the time in French as well as important times during a school day. They will also learn how to say different school subjects in French.

ICT -sketch nation, excel



To link with their work the children will predominantly be using excel to collate their bone measurements and create graphs for analysis.

Additionally we will be using a range of ipad apps to develop their game designing skills

Homework

Reading - Children will be bringing home their home reading books during the week. It would be helpful if you could either write or sign the book to say you have heard them read, it helps us to avoid repeat reading the same pages. *Group Reading* takes place each week with their class teacher and TA, the children will be given a set number of pages to read for their next weekly session. Please sign their book once they have read them. Additionally the children may bring home a third book that they have taken out of the library on our Friday visit.

Spellings - Children will be given differentiated spellings to learn for their weekly spelling test on a Friday morning. Please help your child as much as possible learn these words as they will help with their confidence and fluency as both a reader and writer.

Maths Homework - Mathematics homework will continue to be set weekly for children to access at home. There is also a big focus currently on times tables and being fluent with them. Therefore the homework in KS2 is that children need to access Times Tables Rock Stars at home. They each have their own log ins and should be using it to practise at home. The program automatically sets questions at their pace and level. We ask that the children focus on the Studio and Sound check games on the app. Please let us know if you have any difficulties accessing this at home.

Thanks for your help and continued support

Swimming (Year 3 and 4)

We would be grateful if you could please ensure your child's clothes are clearly labeled with their name. This is especially helpful when we go swimming, as there are occasions when clothes do get mixed up, or are left in the changing rooms. Could parents also ensure they have their swimming hats, and pierced ears need to have the earrings removed. If you are available to help any **Wednesday afternoon** with swimming please get in touch, the more helpers the better!

Forest School / PE Kits

Willow Class will be using the **Forest area** on a **Thursday** afternoon and **PE** on **MONDAYS**.

We have waterproof trousers which we provide for each child but please ensure that their wellies and warm winter coat /hat / gloves are in school so they that are comfortable.

As with our COVID regulations, please can you send your child to school in their kit on a Tuesday so they do not need to get changed.

Home Time

If you need to change the usual arrangements for picking up your child from school, please let school know as soon as possible. As you will understand we cannot allow children to leave the school premises unless we have permission from parents or carers.